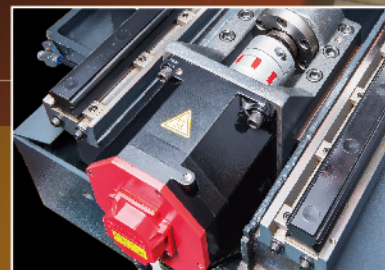




24 Tools Disk Type Tool Magazine

- » Cam type automatic tool change
- » Fast and smooth tool change motions
- » Tool change time: 1.8 seconds
- » Tool selection: bi-directional, shortest path



Three Axes Feed Drive

- » All three axes ball screws are directly coupled to servo motors to maintain high positioning accuracy.
- » Ø50 mm ball screw is supported at both ends by means of heavy duty angular contact ball bearings. Preloaded bearings combined with pretensioned ball screws ensure outstanding rigidity and accuracy of transmission systems.

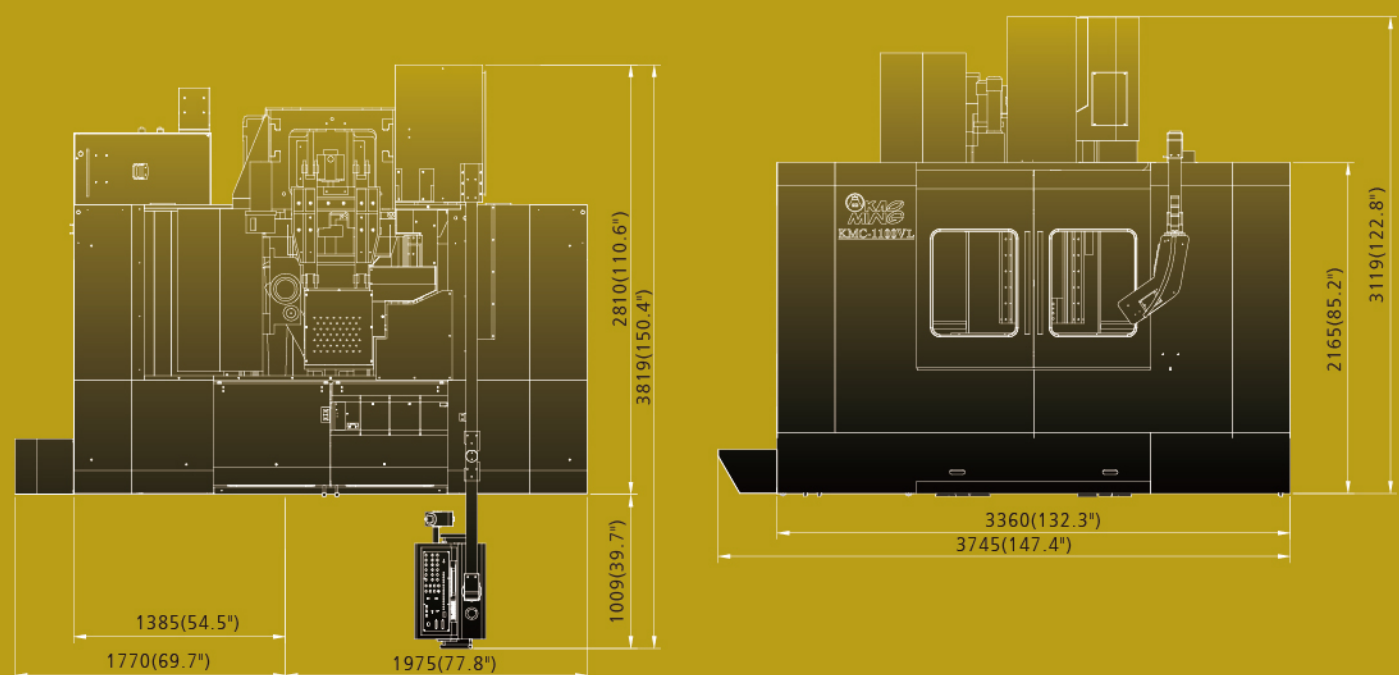


Spindle Head

- » The spindle head is a highly rigid structure, which provides the highest stability during high speed cutting and creates fine finish on cutting surfaces.

KMC-1100VL

DIMENSIONAL DRAWING



SPECIFICATIONS

MODEL	KMC-1100VL
TRAVEL	
X axis travel (right/left)	1,100 mm (43.3")
Y axis travel (forth/back)	550 mm (21.7")
Z axis travel (up/down)	610 mm (24.0")
Spindle nose to table top	100 -- 710 mm (3.9" -- 27.9")
Spindle center to column surface	650 mm (25.6")
TABLE	
Table area	1,300 x 610 mm (51.2" x 24.0")
Max. table load	1200 kgs (2640 lbs)
T-slot	18 mm x 5 x 100 mm (0.709" x 5 x 3.94")
SPINDLE	
Spindle taper	#40
Spindle speed	12,000 rpm
Spindle type	DIRECT DRIVE
Spindle motor (Cont. / 30 min)	11/15 KW (15/20 HP)
FEED	
Rapid traverse rate X / Y: 18,000 mm/min (708.7 ipm) / Z: 15,000 mm/min (590 ipm)	
Cutting feed rate	1 ~ 10 m/min (393.7 ipm)
Minimum input increment	0.001 mm (0.0001")
ATC	
Tool magazine capacity	24
Tool shank	BT-40
Max. tool diameter	Ø76.2 mm (Ø3")
Max. tool length	350 mm (13.8")
Max. tool weight	8 KGS (17.6 lbs)
Tool selection method	Bi-directional, shortest path
Tool change time	1.8 sec
ACCURACY	
Positioning accuracy	±0.005 mm (±0.0002") / Full Travel
Repeatability	±0.003 mm (±0.0001")
MACHINE SIZE	
Floor area required	3,745 x 3,819 mm (147.4" x 150.4")
Overall machine height	3,119 mm (122.8")
Machine net weight	10,000 KGS (22000 lbs)
Power supply	35 KVA
CNC controller	FANUC

○ Design and specifications are subject to change without prior notice.



KAO MING MACHINERY INDUSTRIAL CO., LTD.

HEAD OFFICE
No.67, Ln. 209, Sec.2, Sanfong Rd., Fongyuan
Dist., Taichung City 42054, Taiwan (R.O.C.)

CTSP
No.53, Houke S. Rd., Houli District, Taichung City, 42152 Taiwan.
TEL: +886-4-25577650 FAX: +886-4-25577630
E-MAIL: km@kaoming.com.tw

STANDARD ACCESSORIES

- ┆ Coolant equipment
- ┆ Centralized automatic lubrication system
- ┆ Fully enclosed splash guard
- ┆ Adjusting tools and tool box (1 set)
- ┆ Manual and electrical drawing (1 set)
- ┆ Leveling and foundation fittings (1 set)
- ┆ Work light
- ┆ Spindle cooling system
- ┆ Alarm lamp
- ┆ Air blast
- ┆ Automatic power off
- ┆ Operation finish lamp
- ┆ Screw-type chip conveyor
- ┆ Transformer (except 220V)

OPTIONAL ACCESSORIES

- ┆ CAT50, DIN50 & ISO50 tool shank
- ┆ Link-type chip conveyor
- ┆ Mist coolant unit
- ┆ Oil hole drills interface
- ┆ Linear scale feedback system
- ┆ Automatic tool length measuring system
- ┆ Automatic touch probe centering system
- ┆ Coolant through spindle system (A, B type)
- ┆ NC rotary table
- ┆ Rigid tapping



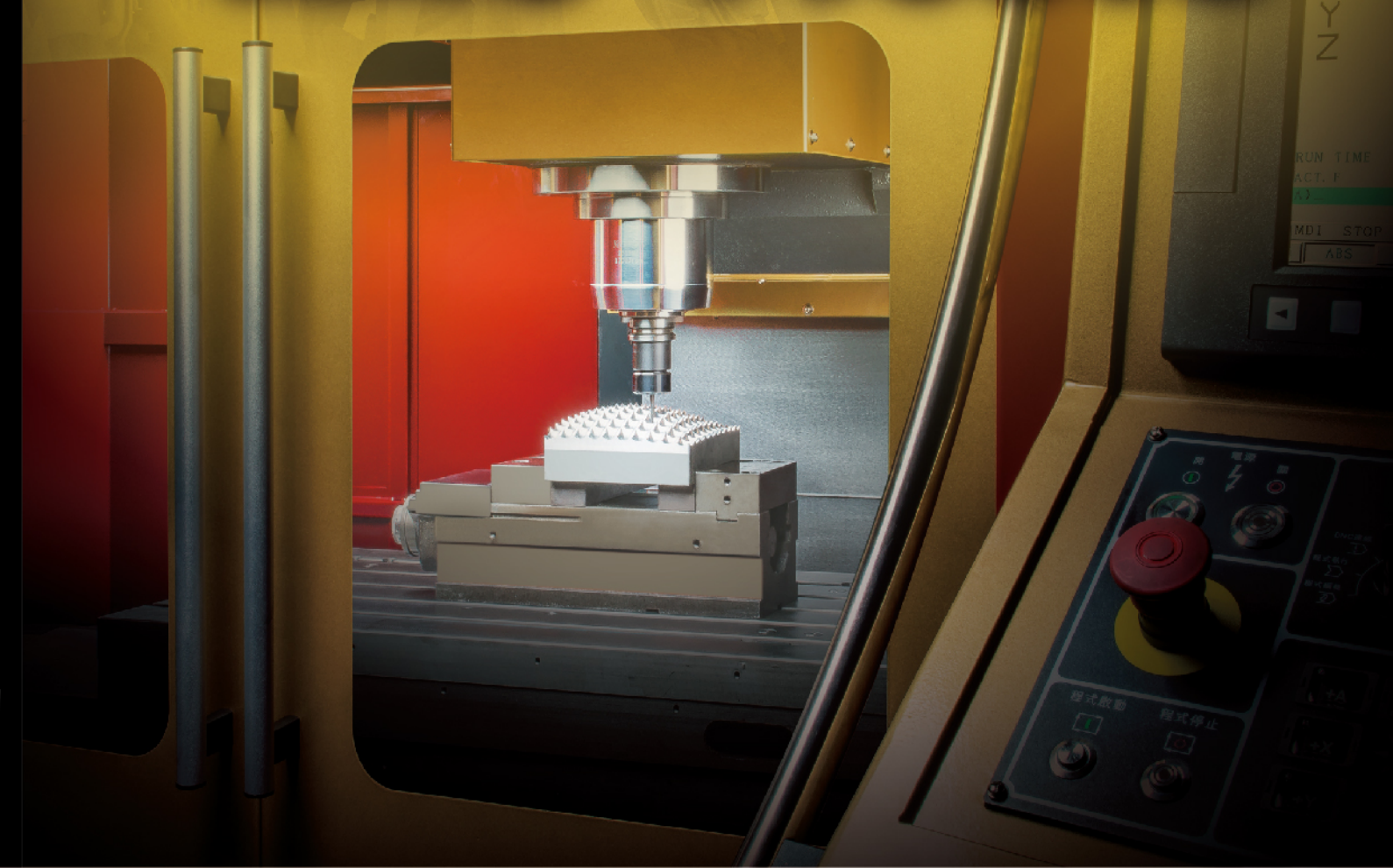
App Store



KM Web



KMC-1100VL



Vertical Machining Center

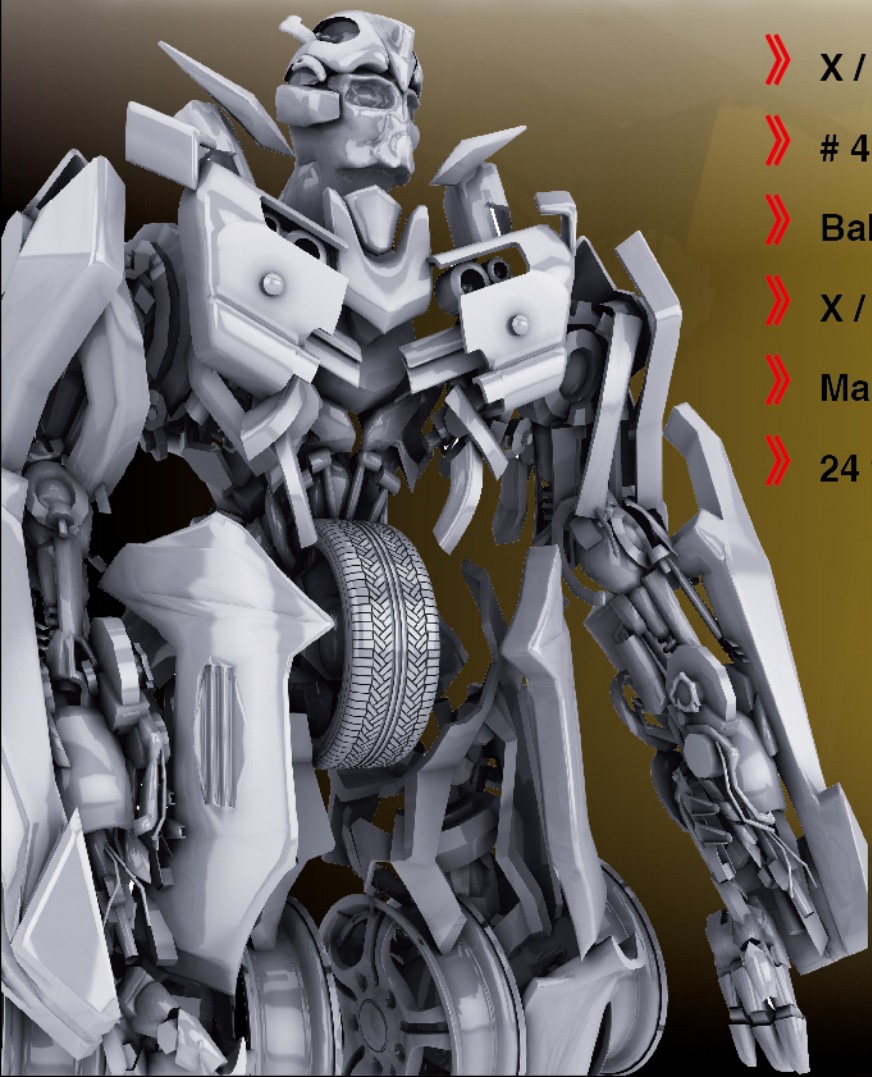


Vertical Machining Center

KMC-1100VL

ALLOWS YOU TO EXPERIENCE UNPRECEDENTED STABILITY IN HIGH SPEED MACHINING

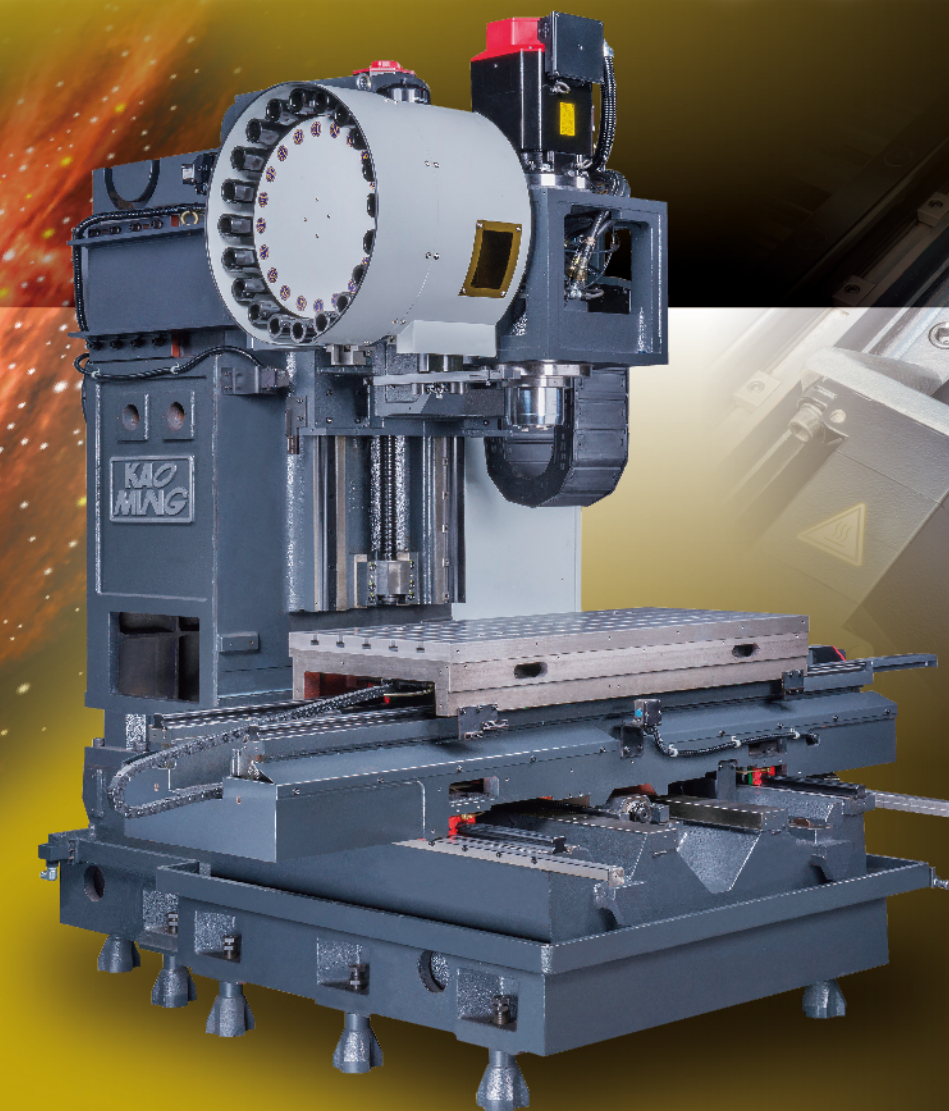
- » X / Y / Z axis travel: 1,100 x 550 x 610 mm
- » # 40 / 12,000 rpm high speed direct-drive spindle
- » Ball type linear ways on all three axes
- » X / Y axis rapid traverse rates: 18 m/min
- » Max. table load: 1,200 kgs
- » 24 tools disk type magazine



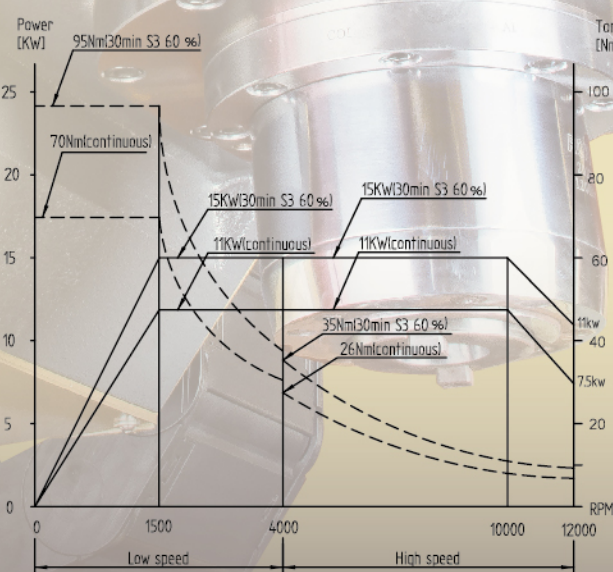
10 Tons of Machine

Weight Linear Ways on Three Axes

12,000 rpm Direct-drive High Speed Spindle



FANUC α il 12 / 12,000
11/15 KW (15/20 HP), 12,000 rpm
CTS : Unavailable



Machine Weight 10 Tons The Heaviest Machine Among Competitive Models

With unique massive structure, the **KMC-1100VL** exhibits unmatched structural rigidity and stability to competitive models.

- » All major structural parts are manufactured from high quality Meehanite cast iron in combination with durable rib reinforcement for excellent rigidity. Extraordinary stability is presented especially when performing high speed machining.
- » Three axes are fully supported without overhang problem.
- » Ball type linear ways on three axes together with large span design dramatically upgrade stability in supporting a heavy load.